

St. Stephens Terrace, Stockwell, SW8

£435,000

1 bedroom flat - conversion for sale

Share of Freehold

Property Details

This charming one-bedroom garden flat is set on the raised ground floor of an elegant Victorian conversion, combining period character with modern living. The attractive façade offers instant kerb appeal, while inside a bright reception room sits to the front, complete with a bay window, high ceilings, decorative cornicing and a feature fireplace, complemented by built-in alcove storage. Opposite, the well-proportioned double bedroom enjoys a peaceful outlook over the garden and offers ample space for furnishings. To the rear, the stylish kitchen features contemporary cabinetry, warm wooden worktops and direct access to the private garden. This generous outside space is a real highlight, with mature planting, established shrubs and a gravelled dining area creating a tranquil and secluded retreat, ideal for entertaining or relaxing. Superbly located, the property is close to Nine Elms Underground and Stockwell Underground, with Larkhall Park and Clapham Common also within easy reach.

Features

- One double bedroom
- Private garden
- Raised ground-floor Victorian conversion
- Bright and airy throughout
- Larkhall Park and Clapham Common within walking distance
- Nine Elms Tube (Northern Line) a nine-minute walk
- Stockwell Tube (Northern and Victoria Lines) a twelve-minute stroll
- Share of freehold
- Chain-free

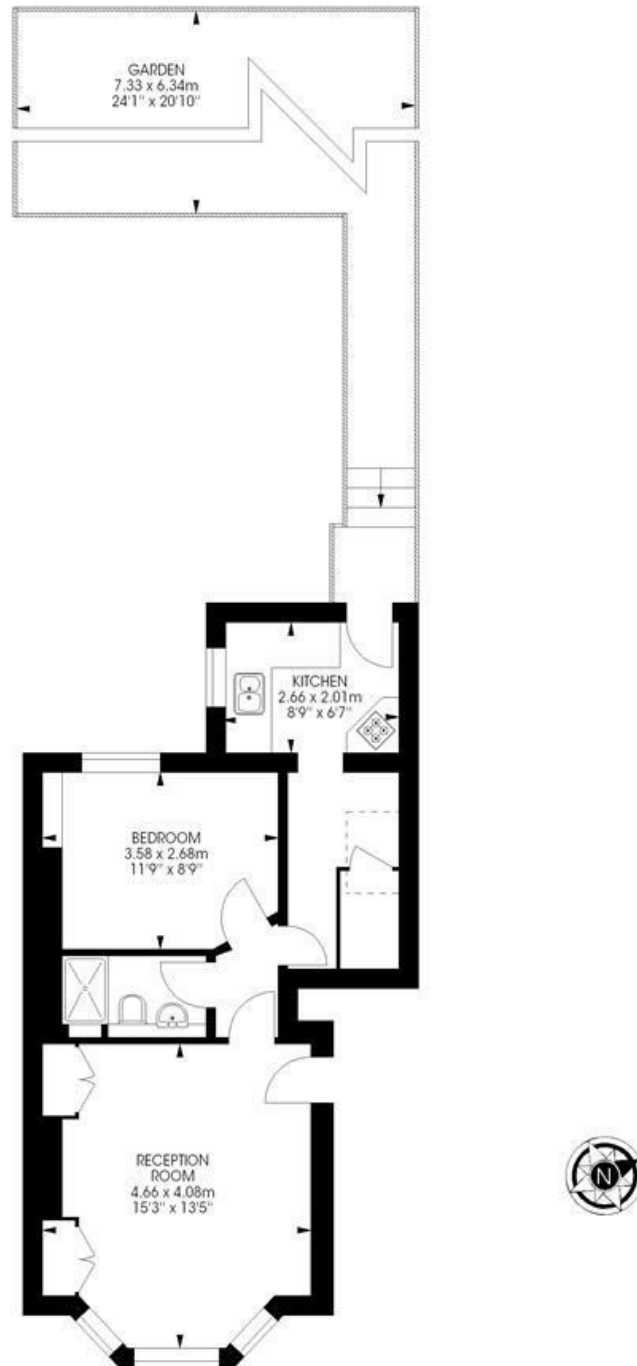
Council tax band C EPC rating D (59)



St. Stephens Terrace, Stockwell, SW8

St Stephens Terrace, SW8
1 bedroom flat

Approximate internal area: 475 sqft / 44.13 sqm



Raised Ground Floor



While we try our very best, floor plans are produced as a guide only and we take no responsibility for the precise accuracy with which any property is represented.

St. Stephens Terrace, Stockwell, SW8

